

# Sleuth

BY GIUCY GIUCE



Bakula's Basement Quilt designed by: **Giucy Giuce**

Quilt Size: **88" x 88"** • Skill Level: **Experienced Beginner**

andover

•  
•  
• [makower uk](http://makower.uk)  
•

Free Pattern Download Available

1384 Broadway, 24TH Floor, New York, NY 10018

Tel. (800) 223-5678 • [andoverfabrics.com](http://andoverfabrics.com)

# Bakula's Basement Quilt

Introducing Andover Fabrics new collection: SLEUTH by Giucy Giuce  
Quilt designed by Giucy Giuce



Quilt finishes 88" x 88"

*Sleuth is a "true crime" fabric collection, the third and final entry in the Fabric from the Attic/Basement line. When a quilter moves into a new home and finds a treasure trove of fabrics in the basement, it opens up a decades-old mystery. Sleuth tries to uncover the mystery of what happened in the house so many years ago. The focus prints have images of fingerprints, codes, lie detector graphs, and so much more. What fun for someone interested in CSI and mysteries.*

## Cutting Directions

**Note:** Read assembly directions before cutting patches. All measurements are cut sizes and include 1/4" seam allowances. A fat 1/8 is a 9" x 20"-22" cut of fabric. A fat 1/4 is an 18" x 20"-22" cut. Borders are cut the exact lengths required plus 1/4" seam allowances. WOF designates the width of fabric from selvedge to selvedge (approximately 42" wide).

### Fabric A

Cut (2) squares 20 1/2"  
Cut (5) squares 4 1/2"  
Cut (6) rectangles 2 1/2" x 4 1/2" for Flying Geese (F.G.)

### Fabric B

Cut (2) squares 4 1/2"

### Fabric C

Cut (2) squares 20 1/2"  
Cut (2) squares 4 1/2"  
Cut (4) rectangles 2 1/2" x 4 1/2" for F.G.

### Fabric D

Fussy-cut (8) strips 4 1/2" x 28 1/2" (Read Step 1 first)  
Fussy-cut (8) strips 4 1/2" x 20 1/2"

### Fabric E

Cut (8) strips 10 1/2" x 28 1/2"  
Cut (4) squares 10 1/2"  
Cut (456) squares 2 1/2" for Flying Geese corners

## Fabric Requirements

		Yardage	Fabric	
<b>Fabric A</b>	focus	1 yard	768-C	
<b>Fabric B</b>	border	fat 1/8	768-K	
<b>Fabric C</b>	focus	1 yard	768-N	
<b>Fabric D</b>	blocks	3 yards	767-C	
<b>Fabric E</b>	border	4 1/2 yards	9248-NP	
<b>Fabric F</b>	F.G.	fat 1/8	9248-L4	
<b>Fabric G</b>	F.G.	fat 1/4	769-N	
<b>Fabric H</b>	F.G.	fat 1/4	769-R	
<b>7 Fat 1/4</b>	F.G.	fat 1/4 each		
	458-N1	458-R	459-N	459-R1
	770-B	771-P	9976-P	
<b>8 Fat 1/8</b>	F.G.	fat 1/8 each		
	459-C	769-B	770-C	770-R
	771-B	771-L	9248-L3	9976-B
<b>Binding</b>		3/4 yard		770-R
<b>Backing</b>		8 yards		767-R

### Fabric F

Cut (6) rectangles 2 1/2" x 4 1/2" for F.G.

### Fabric G

Cut (18) rectangles 2 1/2" x 4 1/2" for F.G.

### Fabric H

Cut (16) rectangles 2 1/2" x 4 1/2" for F.G.

**7 Fat 1/4** From each:

Cut (14) rectangles 2 1/2" x 4 1/2" for F.G.

**8 Fat 1/8** From each:

Cut (10) rectangles 2 1/2" x 4 1/2" for F.G.

### Binding

Cut (10) strips 2 1/2" x WOF for binding

### Backing

Cut (3) lengths 33" x 98", pieced to fit quilt top with overlap on all sides



# Bakula's Basement Quilt

## Making the Quilt

1. Fussy-cut Fabric D strips so that the printed motifs are complete, with no points cut off, plus  $\frac{1}{4}$ " seam allowance all around. Sew the shorter strips to the sides of a Fabric A square. Sew longer strips to the top and bottom. Repeat with the other  $20\frac{1}{2}$ " squares to make 4 big blocks.

2. Fast Flying Geese are used in the sashes for this quilt. Draw a diagonal line on the back of all Fabric E  $2\frac{1}{2}$ " squares. Position a marked square as shown on one end of a fabric  $2\frac{1}{2}$ " x  $4\frac{1}{2}$ " rectangle, right sides together (Diagram 1). Stitch on the marked diagonal line. Cut away the excess fabric. Press the corner up. Repeat this step on the opposite end of the rectangle (Diagram 2). Make 228 Flying Geese.

3. Refer to the Flying Geese figures, join 14 appropriate Flying Geese units to make 6 F.G. 1 sashes and 6 F.G. 2 sashes. Join 5 appropriate Flying Geese to make 4 each of F.G. 3 and F.G. 4, and 2 each of F.G. 5 and F.G. 6. Press seam allowances in each sash toward the "noses" of the Flying Geese.

4. Refer to the Quilt Assembly for the remaining directions. On a large flat surface, lay out the parts in 7 rows as shown, paying careful attention to the orientation of the Flying Geese sashes and the rotation of the Fabric A, B, and C patches. Take note of how the Flying Geese sashes surround the A, B, and C  $4\frac{1}{2}$ " squares. Once you are satisfied with the arrangement, join the parts into rows. Press seam allowances away from the Flying Geese sashes. Join the rows.

## Finishing the Quilt

5. Layer the quilt with batting and backing and baste. Quilt in the ditch around sashes, block patches, and Flying Geese. Quilt around the printed motifs in the blocks. Quilt Fabric E patches as you wish. Bind to finish the quilt.



Diagram 1



Diagram 2



Flying Geese  
Make 228



F.G. 1 - Make 6



F.G. 2 - Make 6



F.G. 3 - Make 4



F.G. 4 - Make 4

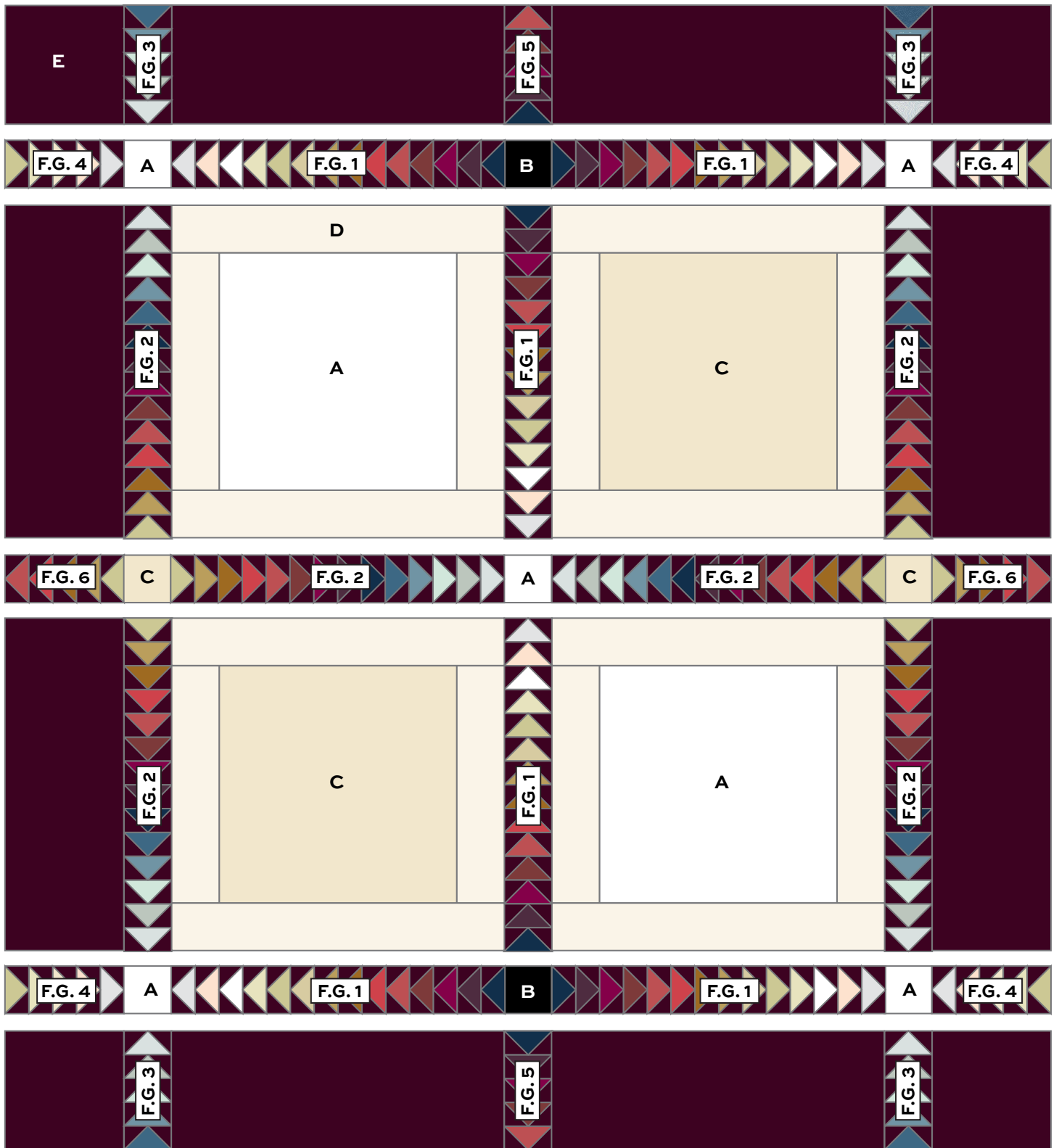


F.G. 5 - Make 2



F.G. 6 - Make 2

# Bakula's Basement Quilt



Quilt Assembly

# Sleuth

GIUCY GIUCE



768-C\*†



768-K\*†



768-N\*†



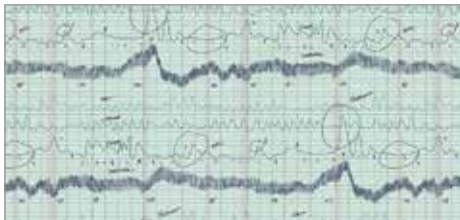
767-B†



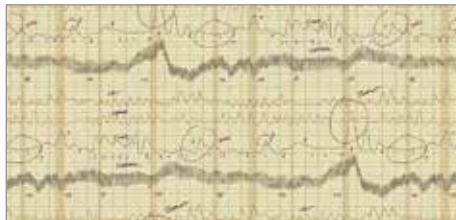
767-C\*†



767-R\*†



769-B\*†



769-N\*†



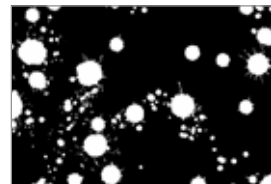
769-R\*†



770-B\*



770-C\*



770-K



770-L



770-R\*



771-B\*



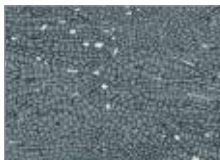
771-C



771-L\*



771-P\*



458-C



458-N1\*



458-R\*



459-C\*



459-N\*



459-R1\*



9976-B\*



9976-P\*



9976-T



9248-L3\*



9248-L4\*



9248-NP\*

Additional fabric from Spectrastatic by Giucy Giuce

\*Indicates fabrics used in quilt pattern.  
†Panels shown at 10%, all other fabrics shown are 25% of actual size

andover : makower uk

Free Pattern Download Available  
1384 Broadway, 24TH Floor, New York, NY 10018  
Tel. (800) 223-5678 • andoverfabrics.com